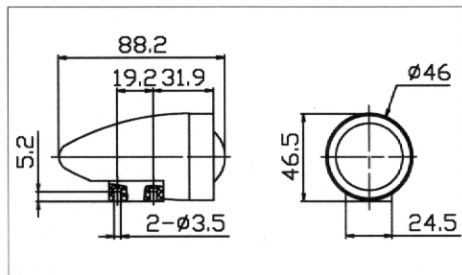




It could be your solution for perfect High frequency reproduction



TN28 Tweeter



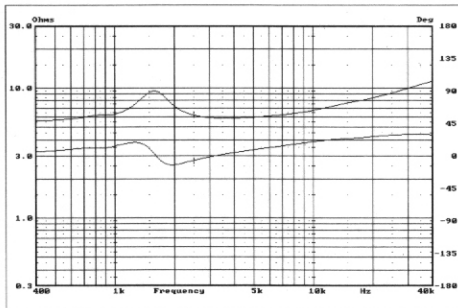
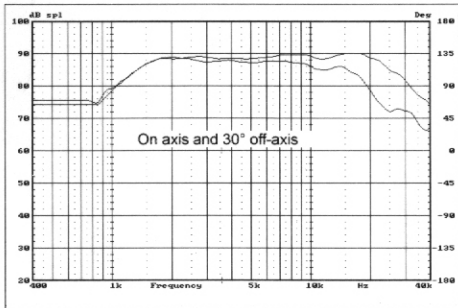
TN28 features:

- "Minimum diffraction" versatile-mounting design;
- Hand treated fabric dome with rotational symmetry moving behavior;
- Ferro fluid cooled 28mm voice coil;
- Flexible lead out wires;
- Shielded, vented double magnet system with two Neodymium rings;
- Large non-resonant rear acoustic chamber;
- Solid metal case from anodized aluminum.

The absence of a mounting flange on the TN28 allows flexible placement and diverse cabinet design. The TN28 can be placed on top of a cabinet to reduce diffraction effects and align acoustical centers of transducers. It also can be mounted in a hole anywhere on the front baffle in maximum possible vicinity to a bass-midrange driver. The solid aluminum case enclosing the magnet system provides effective cooling.

The special weave of the fabric results in better axial symmetry of the entire moving system.

The tweeter has very smooth on-axis and off-axis frequency response delivering excellent acoustic power dispersion. The TN28 creates an accurate imaging source and is distinguished by exceptionally transparent and balanced sound.



TN28 SPECIFICATIONS

Nominal Impedance (Ω)	6
Resonance Frequency (Hz)	1600
Nominal Power Handling (W)	40
Max Power Handling (W)	100
Sensitivity (2.83v/1m) (dB)	88
Weight (kg)	0.14
Voice Coil Diameter (mm)	28
DC Resistance (Ω)	5.1
Voice Coil Former	Aluminum
Magnet System	Shielded Magnet System
Magnets	Neodymium
Recommended Crossover Frequency	>1800Hz